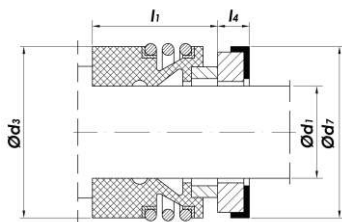


**NM LT**

LP, NM, NP, TP, CR(N) 3/4; 8/16.

Grundfos LM,

: BUBE 12, 16, 22, 33



d <sub>1</sub>	d <sub>3</sub>	d <sub>7</sub>	l <sub>1</sub>	l <sub>4</sub>
12	24	23	25,9	15,0
16	28	27	28,4	12,3
22	36	37	30,0	11,1
33	51	48	35,0	7,5



**NM-12 / NM-13**

NM, NK, TP, CDM, CLM  
28, 38, 45, 48, 55, 65 mm

Grundfos

: BAQE, BBUE, BQQE, GQQE,

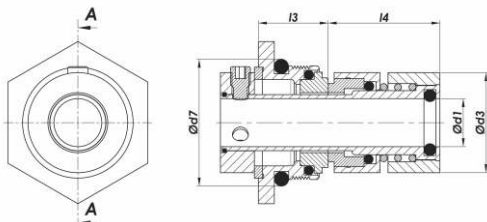
d <sub>1</sub>	d <sub>3</sub>	d <sub>7</sub>	l <sub>1</sub>	l <sub>4</sub>
28	47	43	42,5	7,5
38	58	56	46,0	9,0
45	65	63	36,0	9,0
55	78	75	59,0	12,0
65	90	85	69,0	14,5

**GR2**

CRN, CRE.

: HQQE 12, 16, 22

Grundfos CR, CRI,



d <sub>1</sub>	d <sub>3</sub>	d <sub>7</sub>	l <sub>3</sub>	l <sub>4</sub>
12	25,2	29	19,5	32,0
16	29,7	34	20,5	32,0
22	43	50	26	37,0

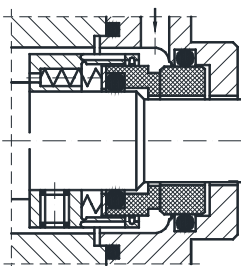


**BV-1 GF**

125, 200, 250

: DBUE

Grundfos TP 100,



1 5/8"	T 100
1 7/8"	T 125
2"	100
2 1/2"	125/ 150
2 3/4"	150
2 5/8"	100/ 200

**BV-2 SRL / BV-4 SRL**

Grundfos-Sarlin

- S1
- S2
- S3
- SV
- SA

